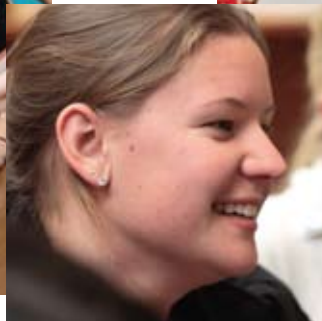


MONTESSORI PROGRAM

- American Montessori Society Early Childhood Certificate
- American Montessori Society Elementary Certificate
- Undergraduate Minor in Montessori Thought
- Master of Arts Degree in Early Childhood Education (with an emphasis in Montessori Education)
- Master of Arts Degree in Montessori Elementary Education
- Master of Education in Montessori Education
- Master of Education in Applied Developmental Education (with an emphasis in Early Childhood or Elementary Education)



The mission of the Kalmanovitz School of Education Montessori Program at Saint Mary's College is to prepare caring and competent teachers to work with a diverse population of children in preschool and the elementary grades, and to become effective agents of positive social change. Maria Montessori, an Italian educator whose work has continued for over 100 years, has had an enduring influence on education from infancy through middle school. Montessori principles of development and the education of the whole child are aligned with the philosophies of the Kalmanovitz School of Education at Saint Mary's College.

The Montessori Teacher Training Program at Saint Mary's College is affiliated with the American Montessori Society (AMS) and is accredited by the Montessori Accreditation Council for Teacher Education (MACTE). Both our Early Childhood and Elementary programs are completed over a two-year period with options to complete an M.A. degree or M.Ed. in Montessori Education. The Montessori Early Childhood Certificate Program prepares the student to teach young children (2.5 through 6 years) in a Montessori classroom. Graduates of this program are also eligible for

the California Child Development Permit through the Commission on Teacher Credentialing. The Montessori Elementary Certificate course of study is designed to prepare candidates to teach children from 6 through 12 years of age using Montessori's elementary methods and curriculum.

Early Childhood Montessori Certificate

Course of Study	Units
Learning & Development	3
Montessori Philosophy in a Cultural Context	3
Positive Discipline/Classroom Mgmt.	2
Practical Life Curriculum	2
Conceptual Curriculum	2
Mathematics: Conceptual Learning	3
Language & Reading Development	3
Study of the Sciences	3
Creative Arts I	1
Creative Arts II	1
Field Observation & Seminars I	1
Field Observation & Seminars II	1
Internship I	2 to 4
Internship II	2 to 4

Elementary Montessori Certificate

Course of Study	Units
Learning & Development	3
Montessori Philosophy in a Cultural Context	3
Positive Discipline/Classroom Mgmt.	2
Technology in the Classroom	1
Elementary Mathematics I	3
Language, Reading & Writing	3
Elementary Foundations	2
Study of the Sciences	3
Creative Arts I	1
Creative Arts II	1
Elementary Mathematics II	2
Integration & Personal Assessment	2
Montessori Overview (if no ECE certification)	2
Field Observation & Seminars I	1
Field Observation & Seminars II	1
Practicum I	2 to 4
Practicum II	2 to 4

Master of Arts in Montessori Elementary Education or Early Childhood Education (w/ an emphasis in Montessori Education)

Course of Study (following certificate courses)	Units
Research Seminar I	3
Research Seminar II	3
Thesis or Synthesis Project	3

Master of Education in Montessori Education

Course of Study (following certificate courses)	Units
Specified Montessori specialization courses	11-13
Research Seminar I	3
Research Seminar II	3
Montessori Seminar	1

Master of Education in Applied Developmental Education (for SMC credential graduates only)

Course of Study (after completing credentials)	Units
Specified Montessori ECE or EL concentration courses	13
Research Seminar I	3
Research Seminar II	3
Thesis or Synthesis Project	3

EDUCATION

Admissions

Applications are accepted year-round. Candidates may apply to begin the Montessori Program in the Fall, January, Spring or Summer terms. An appointment with the Montessori Program Director is recommended (call 925.631.4036 to schedule).

All of the following are required for an application to be complete:

- A completed application form and application fee. (Students may apply online at: www.applyweb.com/apply/smcocsoe/).
- A statement of the prospective student's professional goals, included with their application.
- Three letters of recommendation from professionals who can evaluate the prospective student's potential to be a teacher.
- Two official copies of transcripts from all colleges attended.
- A Baccalaureate degree from an approved institution (not required for admission to the Montessori Early Childhood Certificate Program).
- Proof of health insurance and the results of a current tuberculin test, which are required for work in U.S. public and private schools.

“When looking at different education programs in the Bay Area, I attended an informational session on the Montessori program at St. Mary’s College. It was clear after that meeting that the faculty had expertise, experience and passion. Another strong attraction as I was getting my teaching certificate was the option to continue on to the Masters in Montessori Early Childhood Education, which not many other programs can offer. ...The curriculum of the Montessori Early Childhood program is very well-designed. It leads very logically from introducing the theory, to practical exercises in teaching, to the intern phase. The overall structure allowed me to work full-time while still progressing toward my degree. ...My education at St. Mary’s has led me directly into the professional path I was seeking. I’m teaching full-time, finishing my M.Ed., and planning the next steps in my career. ”

– Erin Hennigan, Graduate of the Kalmanovitz School of Education Montessori Program



Kalmanovitz School of Education at Saint Mary's College of California

INCLUSIVE, GLOBAL, TRANSFORMATIVE

Here at the Kalmanovitz School of Education at Saint Mary's, we are guided by the Lasallian tradition: "Enter to Learn, Leave to Serve." Our faculty is committed to the core principles of social justice, quality education and inclusive community, emphasizing the skills of critical thinking, precise communication and creative problem-solving. We offer challenging opportunities for students to experience professional practice.

Our students are:

- Challenged by a curriculum that integrates research-based practices with opportunities for experience in professional settings.
- Guided by an interdisciplinary faculty that excels in teaching, scholarship and service.
- Supported by a staff attuned to the unique needs of active professionals.
- Networked with a cohort of peers who bring diverse perspectives to the exploration of real-world problems.
- Transformed by learning experiences that emphasize inquiry, reflection, ethical values and social justice.

The Kalmanovitz School of Education is fully accredited by the Western Association of Schools and Colleges and offers well-respected credential programs approved by the California Commission on Teacher Credentialing (CTC) and the American Montessori Society. The Master of Arts Degree in Counseling with an emphasis in School Counseling (K-12) or School Psychology (3 yrs-12th grade) fulfills the requirements for the California Pupil Personnel Services (PPS) Credential. The College is a member of the California Council on the Education of Teachers and the American Association of Colleges for Teacher Education.

Financial Aid & Scholarships

The Financial Aid process begins by filing a free Application for Federal Student Aid (FAFSA) online at: www.fafsa.ed.gov (Saint Mary's College Title IV code is: #001302). Prospective students should also complete a Saint Mary's Financial Aid application, available on Saint Mary's website. To ensure maximum consideration for all programs, students are asked to contact the Financial Aid Office at: 925.631.4370, or the Kalmanovitz School of Education at: 925.631.4149 with any questions.

Twice a year, in the fall and spring, eligible Kalmanovitz School of Education students have the opportunity to apply for scholarships distributed by the school. Students are encouraged to research and apply for other scholarships that may be available through outside organizations or entities.

A loan forgiveness program (APLE), providing financial assistance for future teachers, is offered by the State of California. Information on this program is available from the California Student Aid Commission at: www.csac.ca.gov.