

SPECIAL EDUCATION PROGRAM

- Education Specialist Credential Level I & II (Mild/Moderate Disabilities)
- Master of Arts Degree in Special Education
- Master of Education Degree in Special Education

Program Structure

Every Kalmanovitz School of Education Special Education Program is a unique, personalized, professional course of study for teaching individuals with special needs. Dedicated and supportive faculty use a holistic approach in their teaching as they guide students toward meeting their professional goals. Students reflect on their field-based experiences by applying their knowledge of theory and accepted practice. All courses integrate current research and an examination of curriculum with field experiences in diverse school settings. The programs in Special Education are designed to prepare candidates for careers in working with children with disabilities and to meet the needs of those presently working in Special Education settings who wish to strengthen their expertise.



Admissions

Applications are accepted on a year-round basis to begin the Special Education Credential Program in the Fall term. An appointment with an Admissions Counselor is recommended (call 925.631.4700 to schedule).

All of the following are required for an application to be complete:

- A completed application form and application fee. (Students may apply online at: www.applyweb.com/apply/smcocsoe/).
- A statement of a prospective student's professional goals, included with the application.
- A passing score on the California Basic Educational Skills Test (CBEST). (To register online, visit: www.cbest.nesinc.com).
- Three letters of recommendation from professionals who can evaluate a prospective student's potential to be a teacher.
- A Baccalaureate degree (in any major except education) from an approved institution.
- Two official copies of transcripts from all colleges attended.
- Preparation for the California Subject Examination for Teachers (CSET) Exam. Note: A passing score is required before a student may enroll in Supervised Teaching I and II.
- Results of a tuberculin test, which is required for work in U.S. public schools.



Course of Study

Education Specialist Credential Level I

(Preliminary Credential: Mild/Moderate)

Prerequisite Course: An undergraduate or graduate course in Human Development taken within the last five years.

Required Courses: 30.5 units

Notes: Coursework may be reduced for individuals who hold a current California Multiple or Single Subject Credential. An internship option is available for those candidates who meet established requirements.

Education Specialist Credential Level II

(Professional Clear Credential: Mild/Moderate)

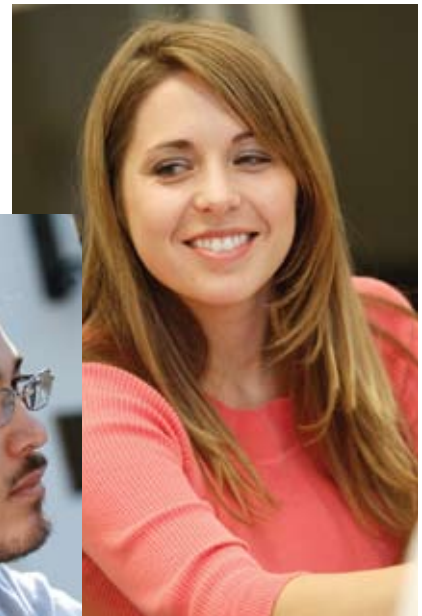
Required Courses: 19 units, which includes 15 units of SMC coursework and 4 units of district activity

Master of Arts Degree in Special Education

(The Professional Clear Special Education Credential may be extended to earn a Master of Arts degree.)
Required Courses: 12 units, in addition to the 19 units for the Level II Education Specialist Credential

Master of Education Degree in Special Education

(The Master of Education Degree in Special Education includes all the coursework necessary to earn the Special Education Preliminary Credential.)
Required Courses: 12 units, in addition to the 30.5 units for the Level I Education Specialist Credential



"I learned how to teach and how to be an administrator from actual teachers and administrators. That's the best part of being at SMC, you're taught by people that are actually in the trenches. They share with you real scenarios, real documents and real procedures. The curriculum was rigorous but practical; the assignments prepared me for the work that I encounter in schools. I'm using my documents and reports from SMC as templates in my professional career. And the requirement that all student teachers must teach in a Title I school prepares teachers for the reality of schools today. Currently I'm a VP at a middle school. My SMC training has given me the tools to stand apart from others. I feel like I'm still part of the School of Education community. I speak to my instructors and cohort classmates often."

- Kelly Johnson, Kalmanovitz School of Education Graduate; Vice-Principal, Windemere Ranch Middle School, San Ramon, Calif.



Kalmanovitz School of Education at Saint Mary's College of California

INCLUSIVE, GLOBAL, TRANSFORMATIVE

Here at the Kalmanovitz School of Education at Saint Mary's, we are guided by the Lasallian tradition: "Enter to Learn, Leave to Serve." Our faculty is committed to the core principles of social justice, quality education and inclusive community, emphasizing the skills of critical thinking, precise communication and creative problem-solving. We offer challenging opportunities for students to experience professional practice.

Our students are:

- Challenged by a curriculum that integrates research-based practices with opportunities for experience in professional settings.
- Guided by an interdisciplinary faculty that excels in teaching, scholarship and service.
- Supported by a staff attuned to the unique needs of active professionals.
- Networked with a cohort of peers who bring diverse perspectives to the exploration of real-world problems.
- Transformed by learning experiences that emphasize inquiry, reflection, ethical values and social justice.

The Kalmanovitz School of Education is fully accredited by the Western Association of Schools and Colleges and offers well-respected credential programs approved by the California Commission on Teacher Credentialing (CTC) and the American Montessori Society. The Master of Arts Degree in Counseling with an emphasis in School Counseling (K-12) or School Psychology (3 yrs-12th grade) fulfills the requirements for the California Pupil Personnel Services (PPS) Credential. The College is a member of the California Council on the Education of Teachers and the American Association of Colleges for Teacher Education.

Financial Aid & Scholarships

The Financial Aid process begins by filing a free Application for Federal Student Aid (FAFSA) online at: www.fafsa.ed.gov (Saint Mary's College Title IV code is: #001302). Prospective students should also complete a Saint Mary's Financial Aid application, available on Saint Mary's website. To ensure maximum consideration for all programs, students are asked to contact the Financial Aid Office at: 925.631.4370, or the Kalmanovitz School of Education at: 925.631.4149 with any questions.

Twice a year, in the fall and spring, eligible Kalmanovitz School of Education students have the opportunity to apply for scholarships distributed by the school. Students are encouraged to research and apply for other scholarships that may be available through outside organizations or entities.

A loan forgiveness program (APLE), providing financial assistance for future teachers, is offered by the State of California. Information on this program is available from the California Student Aid Commission at: www.csac.ca.gov.