



SAINT MARY'S COLLEGE  
of California

Vice President for College Communications  
Vice Provost for Enrollment

**Memorandum**

**To:** Members of the Saint Mary's College Community  
**From:** Michael Bassada  
**Date:** September 10, 2008  
**Subject:** Fall 2008 Undergraduate New Student Enrollment

Attached are several tables and charts providing descriptive and historical information on new undergraduate student enrollment at Saint Mary's. The following items are worthy of note:

- 1) Fall 2008 new student enrollment of 799 is an all time high and exceeds the College's enrollment target of 750. New freshmen enrollment of 675 matches fall 2005's record level. New transfer enrollment of 124 is 35 students fewer (28.2%) than for fall 2007.
- 2) Institutional aid for new students rose dramatically for fall 2008. Total aid exceeded the budget goal by over \$2.4 million (32%). The proportion of new students who are Pell Grant recipients (25.5%) is slightly higher than last year's total (24.5%). Increases in institutional aid expenditures are a consequence of higher levels of student need, lower proportional levels of federal and state aid and aggressive targeting of high ability students.
- 3) The number of applicants for freshman admission to Saint Mary's for fall 2008 declined by 7.4% (291). The decrease in applications resulted primarily from discontinued use of "priority" applications. The first year student acceptance rate declined slightly to 81%. Yield (portion of admitted students who actually enroll) rose significantly from 18.9% for fall 2007 to 22.8% for fall 2008.
- 4) Transfer applications declined by 6.1% (27) to 417 for fall 2008. New transfer student enrollment of 124 is the second lowest in the past three decades. Yield on admitted transfer students (45.4%) also declined.
- 5) The average high school GPA of entering Saint Mary's freshmen remained the same for fall 2008 as for fall 2007, 3.33.
- 6) Enrollment of new first year students admitted with Honors at Entrance increased by 10% to 78 for fall 2008, slightly lower than the all time high of 80 in fall 2005.
- 7) The SAT average (critical reading and mathematics) of new freshmen students at SMC remained essentially unchanged for fall 2008, at 1081.
- 8) Over 43% of new Saint Mary's freshmen students are African American, American Indian, Asian, or Latino, an increase from last year's level (38%). All groups experienced increased enrollment for fall 2008.

9) Female students comprise 65.2% of the new first year class, while males make up 34.8%.

10) Enrollment of students from Lasallian high schools increased to 60 (+9.1%) for fall 2008 – a record level. The proportion of new students coming from Catholic high schools also increased to 39%, the highest level since fall 1991.

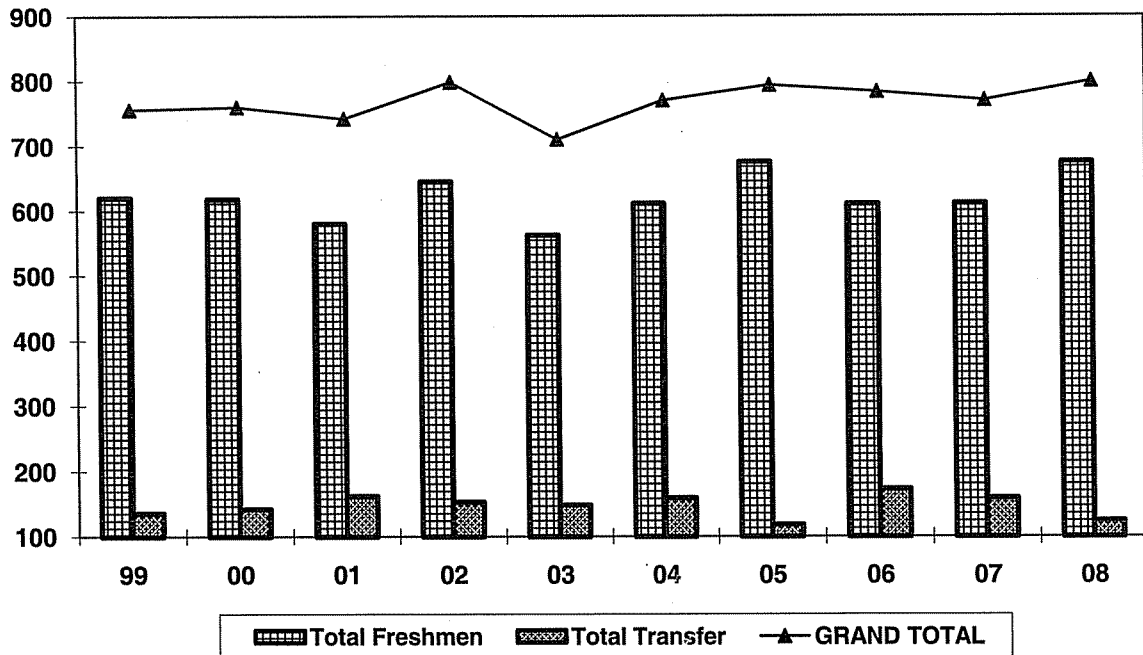
11) The geographic diversity of the new student class increased to near record levels:

- a. Increased proportions of enrolled new first year students come from southern California or out of state.
- b. Enrollment of new international students increased by 53% (7.)

Please feel free to contact me with questions or comments about these data.

## UNDERGRADUATE NEW ENROLLED STUDENTS FALL 1999 - FALL 2008

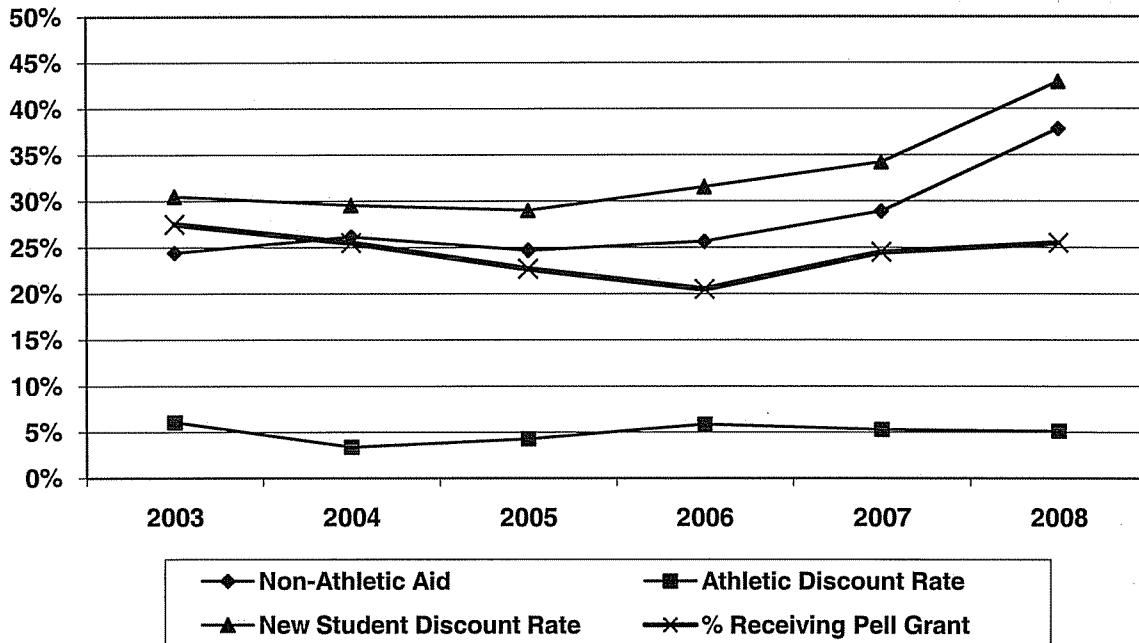
	99	00	01	02	03	04	05	06	07	08
<b>Freshmen</b>										
<b>Male</b>	262	250	228	243	244	223	264	217	237	235
<b>Female</b>	358	368	352	402	318	388	411	393	374	440
<b>Total Freshmen</b>	<b>620</b>	<b>618</b>	<b>580</b>	<b>645</b>	<b>562</b>	<b>611</b>	<b>675</b>	<b>610</b>	<b>611</b>	<b>675</b>
<b>% of Total Undergraduate Enrollment</b>	26.6%	24.8%	23.2%	25.1%	22.4%	25.9%	26.7%	24.5%	24.3%	26.7%
<b>Transfer</b>										
<b>Male</b>	50	61	59	68	59	57	44	73	69	49
<b>Female</b>	86	81	103	85	89	102	74	100	90	75
<b>Total Transfer</b>	<b>136</b>	<b>142</b>	<b>162</b>	<b>153</b>	<b>148</b>	<b>159</b>	<b>118</b>	<b>173</b>	<b>159</b>	<b>124</b>
<b>% of Total Undergraduate Enrollment</b>	5.8%	5.7%	6.5%	6.0%	5.9%	6.5%	4.7%	6.9%	6.3%	4.9%
<b>GRAND TOTAL</b>	<b>756</b>	<b>760</b>	<b>742</b>	<b>798</b>	<b>710</b>	<b>770</b>	<b>793</b>	<b>783</b>	<b>770</b>	<b>799</b>



**SMC NEW STUDENT  
REVENUE, DISCOUNT RATE AND PELL GRANT DATA  
2003 - 2008**

	2003	2004	2005	2006	2007	2008
Total New Students	710	770	793	783	770	799
Tuition Rate	\$23,775	\$25,150	\$27,280	\$29,050	\$31,080	\$33,250
New Student Revenue	\$16,880,250	\$19,365,500	\$21,633,040	\$22,746,150	\$23,931,600	\$26,566,750
Non-Athletic Aid	\$4,122,647	\$5,065,402	\$5,345,591	\$5,835,313	\$6,916,937	\$10,047,540
<b>Non-Athletic Discount Rate</b>	<b>24.4%</b>	<b>26.2%</b>	<b>24.7%</b>	<b>25.7%</b>	<b>28.9%</b>	<b>37.8%</b>
Athletic	\$1,021,934	\$653,456	\$922,921	\$1,333,216	\$1,263,613	\$1,356,560
<b>Athletic Discount Rate</b>	<b>6.1%</b>	<b>3.4%</b>	<b>4.3%</b>	<b>5.9%</b>	<b>5.3%</b>	<b>5.1%</b>
Total Aid	\$5,144,581	\$5,718,858	\$6,268,512	\$7,168,529	\$8,180,550	\$11,404,100
Net Revenue	\$11,735,669	\$13,646,642	\$15,364,528	\$15,577,621	\$15,751,050	\$15,162,650
New Revenue per Student	\$16,529	\$17,723	\$19,375	\$19,895	\$20,456	\$18,977
<b>New Student Discount Rate</b>	<b>30.5%</b>	<b>29.5%</b>	<b>29.0%</b>	<b>31.5%</b>	<b>34.2%</b>	<b>42.9%</b>
% Receiving Pell Grant	27.5%	25.5%	22.7%	20.5%	24.5%	25.5%

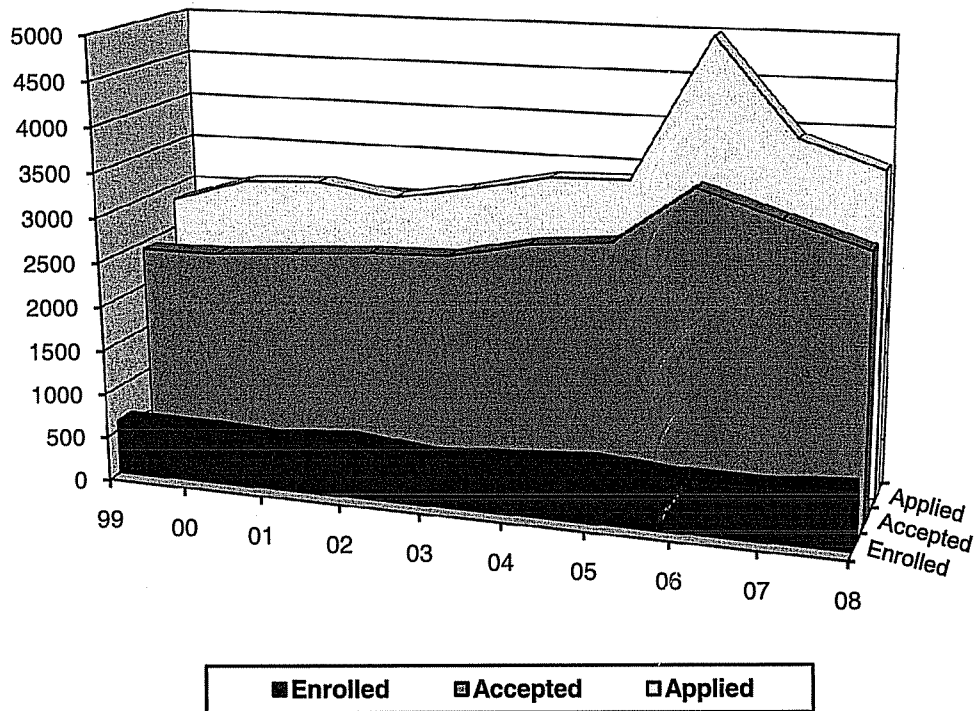
**New Student - Discount Rate, Revenue and Pell Grant Data**



**UNDERGRADUATE FRESHMEN  
APPLICATIONS, ACCEPTANCES AND ENROLLED  
FALL 1999 - FALL 2008**

	<b>99</b>	<b>00</b>	<b>01</b>	<b>02</b>	<b>03</b>	<b>04</b>	<b>05</b>	<b>06</b>	<b>07</b>	<b>08</b>
Applied	2830	3103	3146	3022	3172	3354	3381	4991	3929	3638
Accepted	2419	2428	2496	2559	2590	2779	2861	3508	3231	2961
Acceptance Rate	85%	78%	79%	85%	82%	83%	85%	70%	82%	81%
<b>Enrolled</b>	<b>620</b>	<b>618</b>	<b>580</b>	<b>645</b>	<b>562</b>	<b>611</b>	<b>675</b>	<b>610</b>	<b>611</b>	<b>675</b>
Yield	25.6%	25.5%	23.2%	25.2%	21.7%	22.0%	23.6%	17.4%	18.9%	22.8%

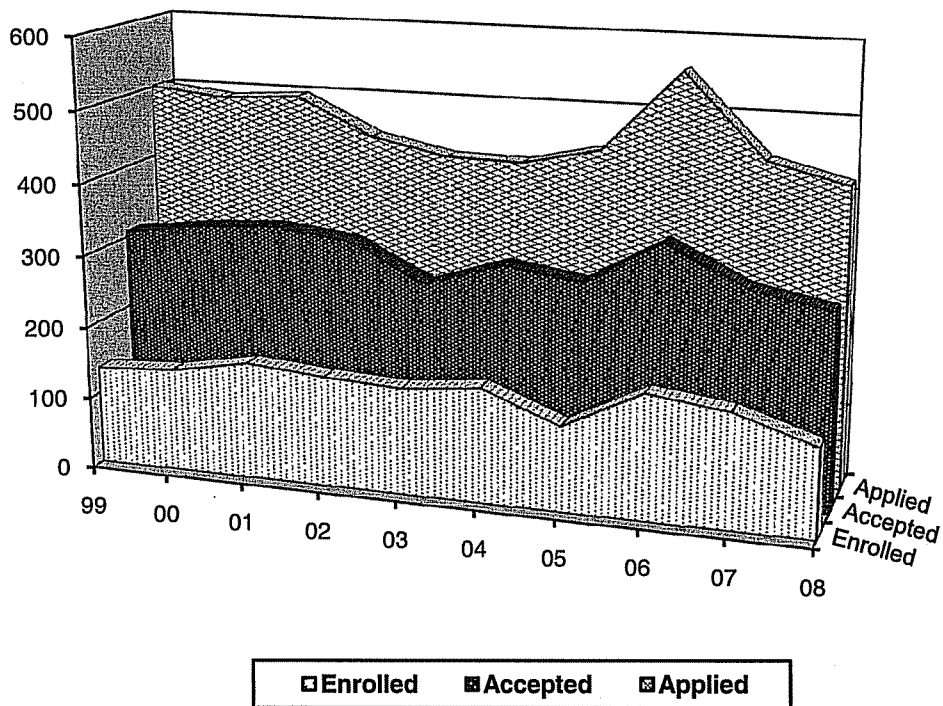
**Applications, Acceptances and Enrolled:  
Undergraduate Freshmen**



**UNDERGRADUATE TRANSFERS  
APPLICATIONS, ACCEPTANCES AND ENROLLED  
FALL 1999 - FALL 2008**

	<b>99</b>	<b>00</b>	<b>01</b>	<b>02</b>	<b>03</b>	<b>04</b>	<b>05</b>	<b>06</b>	<b>07</b>	<b>08</b>
Applied	501	490	497	446	424	422	446	558	444	417
Accepted	308	323	330	318	266	301	285	347	293	273
Acceptance Rate	62%	66%	66%	71%	63%	71%	64%	62%	66%	65%
<b>Enrolled</b>	<b>136</b>	<b>142</b>	<b>162</b>	<b>153</b>	<b>148</b>	<b>159</b>	<b>118</b>	<b>173</b>	<b>159</b>	<b>124</b>
Yield	44.2%	44.0%	49.1%	48.1%	55.6%	52.8%	41.4%	49.9%	54.3%	45.4%

**Applications, Acceptances and Enrolled:  
Undergraduate Transfers**

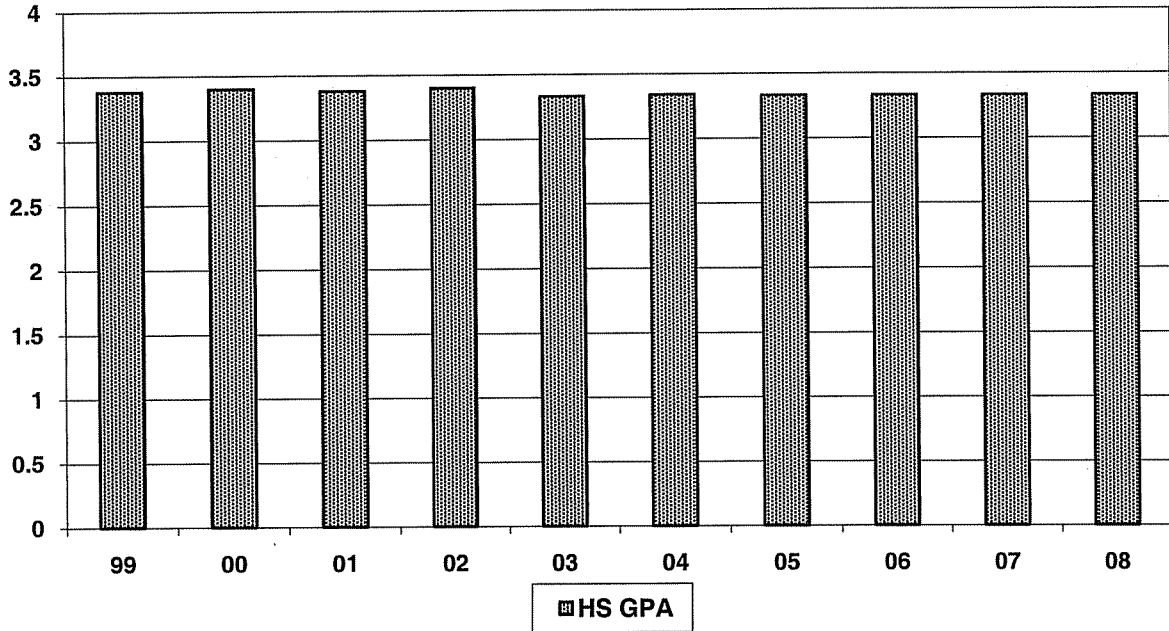


**SELECTED ACADEMIC CHARACTERISTICS  
NEW STUDENTS  
FALL 1999 - FALL 2008**

	99	00	01	02	03	04	05	06	07	08
<b>Presidential Scholars Honors at Entrance</b>	8	18	11	19	17	13	32	21	28	20
<b>Freshman</b>	63	67	45	71	58	61	80	63	71	78
<b>Transfer</b>	14	7	15	15	7	19	8	19	21	14
<b>HS GPA</b>	<b>3.38</b>	<b>3.40</b>	<b>3.38</b>	<b>3.40</b>	<b>3.33</b>	<b>3.34</b>	<b>3.33</b>	<b>3.33</b>	<b>3.33</b>	<b>3.33</b>
<b>***SAT Verbal</b>	544	551	548	551	544	547	548	537	541	541
<b>***SAT Math</b>	548	552	547	552	551	548	548	543	538	540
<b>***TOTAL SAT</b>	<b>1092</b>	<b>1103</b>	<b>1095</b>	<b>1103</b>	<b>1095</b>	<b>1095</b>	<b>1096</b>	<b>1080</b>	<b>1079</b>	<b>1081</b>

\*\*\* For explanation of how SAT scores are calculated see note in Frequently Asked Question Section of Fact Book.

**NEW FRESHMEN  
HIGH SCHOOL GRADE POINT AVERAGE**



**UNDERGRADUATE FRESHMEN SAT SCORES  
FALL 2003 - FALL 2008**

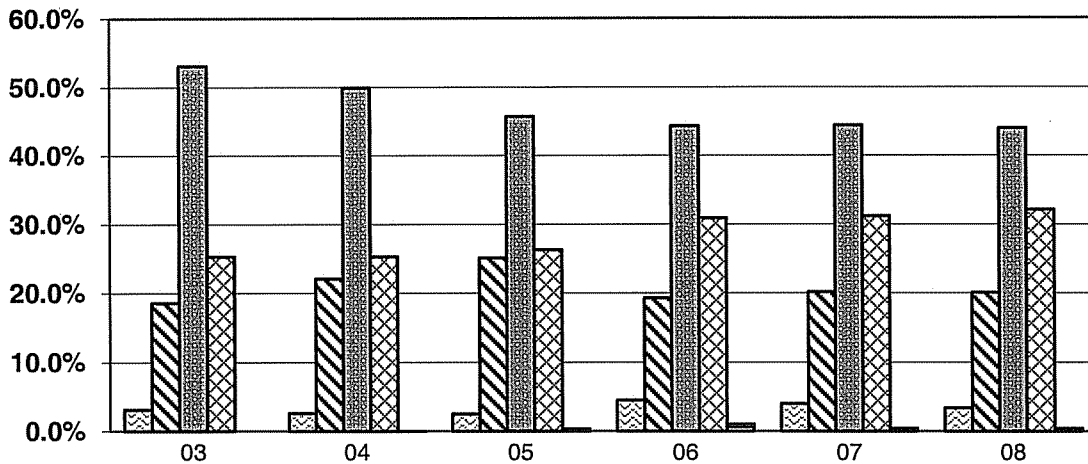
**Verbal/Critical Reading**

	<b>2003</b>	<b>2004</b>	<b>2005</b>	<b>2006</b>	<b>2007</b>	<b>2008</b>
700-800	3.1% (14)	2.6% (13)	2.5% (14)	4.5% (22)	4.0% (20)	3.4% (19)
600-690	18.6% (85)	22.1% (111)	25.1% (141)	19.3% (95)	20.2% (101)	20.1% (113)
500-590	53.1% (243)	49.9% (251)	45.7% (257)	44.3% (218)	44.4% (222)	44.0% (247)
400-490	25.3% (116)	25.3% (127)	26.3% (148)	30.9% (152)	31.2% (156)	32.1% (180)
300-390	0.0% (0)	0.1% (1)	0.3% (2)	1.0% (5)	0.04% (2)	0.4% (2)
<b>Number</b>	<b>458</b>	<b>503</b>	<b>562</b>	<b>492</b>	<b>500</b>	<b>561</b>
<b>Mean</b>	<b>544</b>	<b>547</b>	<b>548</b>	<b>537</b>	<b>542</b>	<b>541</b>
<b>Median</b>	<b>540</b>	<b>540</b>	<b>540</b>	<b>520</b>	<b>530</b>	<b>530</b>
<b>STD.DEV</b>	<b>70</b>	<b>69</b>	<b>73</b>	<b>81</b>	<b>79</b>	<b>77</b>

**Math**

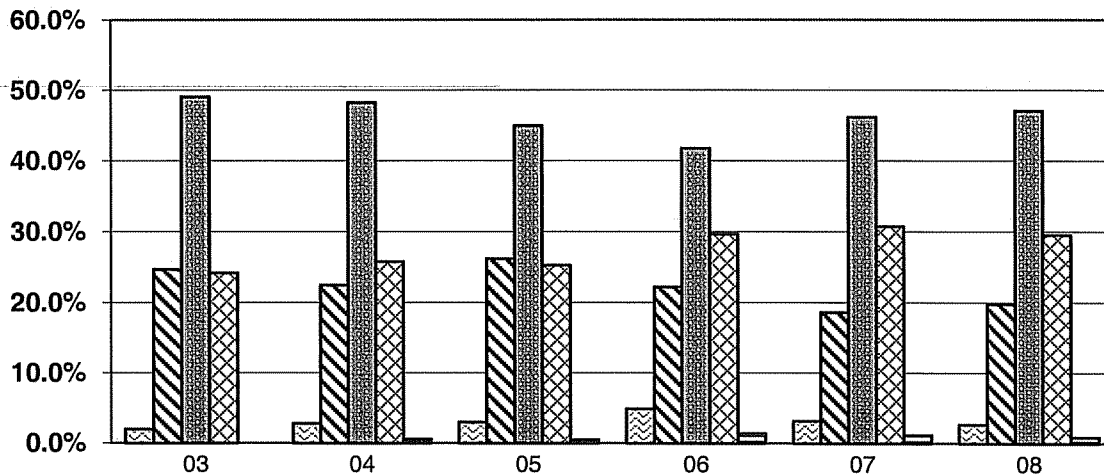
	<b>2003</b>	<b>2004</b>	<b>2005</b>	<b>2006</b>	<b>2007</b>	<b>2008</b>
700-800	2.0% (9)	2.8% (14)	3.0% (17)	4.9% (24)	3.2% (16)	2.7% (15)
600-690	24.7% (113)	22.5% (113)	26.2% (147)	22.2% (109)	18.6% (93)	19.8% (111)
500-590	49.1% (225)	48.3% (243)	45.0% (253)	41.8% (206)	46.2% (231)	47.1% (264)
400-490	24.2% (111)	25.8% (130)	25.3% (142)	29.7% (146)	30.8% (154)	29.6% (166)
300-390	0.0% (0)	0.6% (3)	0.5% (3)	1.4% (7)	1.2% (6)	0.9% (5)
<b>Number</b>	<b>458</b>	<b>503</b>	<b>562</b>	<b>492</b>	<b>500</b>	<b>561</b>
<b>Mean</b>	<b>551</b>	<b>548</b>	<b>548</b>	<b>543</b>	<b>538</b>	<b>540</b>
<b>Median</b>	<b>550</b>	<b>550</b>	<b>540</b>	<b>540</b>	<b>540</b>	<b>540</b>
<b>STD.DEV</b>	<b>70</b>	<b>73</b>	<b>75</b>	<b>82</b>	<b>79</b>	<b>78</b>

### SAT VERBAL/CRITICAL READING SCORES



700-800	3.1%	2.6%	2.5%	4.5%	4.0%	3.4%
600-690	18.6%	22.1%	25.1%	19.3%	20.2%	20.1%
500-590	53.1%	49.9%	45.7%	44.3%	44.4%	44.0%
400-490	25.3%	25.3%	26.3%	30.9%	31.2%	32.1%
300-390	0.0%	0.1%	0.3%	1.0%	0.4%	0.4%

### SAT MATH SCORES

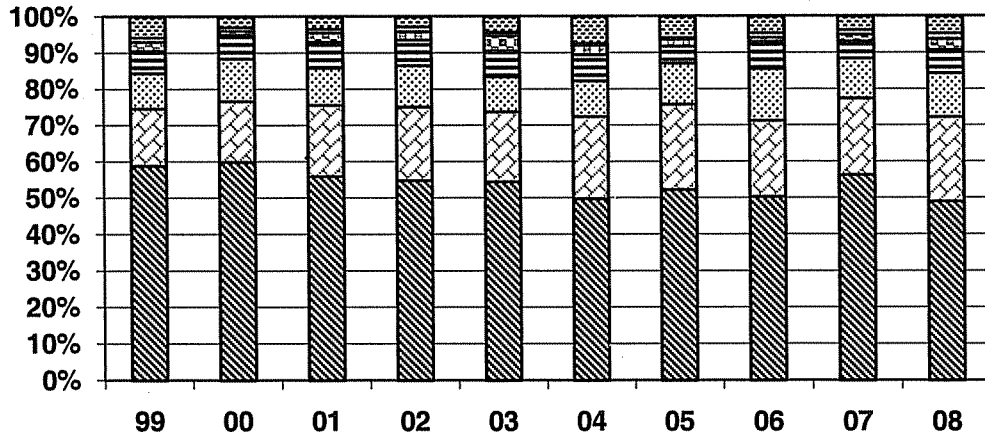


700-800	2.0%	2.8%	3.0%	4.9%	3.2%	2.7%
600-690	24.7%	22.5%	26.2%	22.2%	18.6%	19.8%
500-590	49.1%	48.3%	45.0%	41.8%	46.2%	47.1%
400-490	24.2%	25.8%	25.3%	29.7%	30.8%	29.6%
300-390	0.0%	0.6%	0.5%	1.4%	1.2%	0.9%

**NEW FRESHMEN STUDENTS BY  
GENDER AND ETHNICITY  
FALL 1999 - FALL 2008  
Percentages**

	99	00	01	02	03	04	05	06	07	08
<b>Male</b>	42.3	40.5	39.3	37.7	43.4	36.5	39.2	35.6	38.7	34.8
<b>Female</b>	57.7	59.5	60.7	62.3	56.6	63.5	60.8	64.4	61.2	65.2
<b>African American</b>	6.1	6.6	7.2	7.0	7.1	7.2	4.7	7.5	4.7	6.4
<b>American Indian</b>	1.2	1.0	1.0	1.3	0.9	0.5	0.4	1.3	1.2	1.6
<b>Asian American</b>	9.7	11.8	10.2	11.4	9.6	9.8	11.3	14.3	11.0	12.0
<b>Latino</b>	15.8	16.8	19.7	20.3	19.4	22.7	23.6	21.0	21.1	23.4
<b>White</b>	58.9	60.2	56.0	54.6	54.4	49.7	52.2	50.3	56.3	48.9
<b>International</b>	2.6	1.0	2.6	2.3	4.3	2.6	1.9	1.0	1.9	3.0
<b>Other/Not Reported</b>	5.7	3.0	3.4	2.8	4.3	7.4	5.9	4.6	3.8	4.7
<b>BASE:</b>	<b>620</b>	<b>618</b>	<b>580</b>	<b>645</b>	<b>562</b>	<b>611</b>	<b>675</b>	<b>610</b>	<b>611</b>	<b>675</b>

**NEW FRESHMEN STUDENTS:  
ETHNIC DISTRIBUTION 1999-2008**

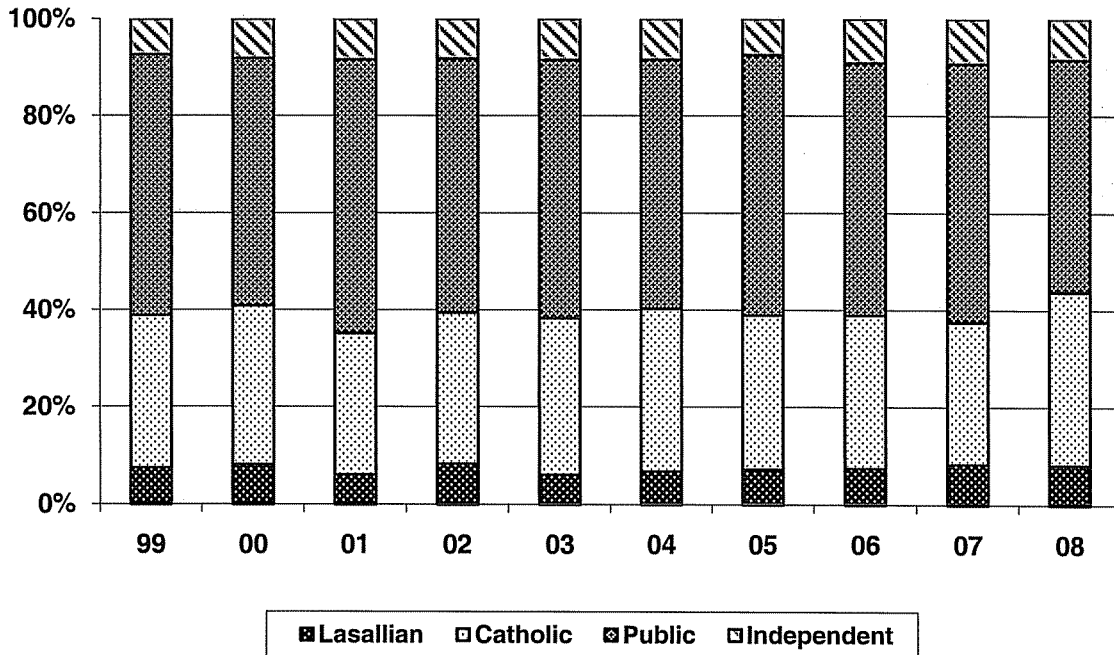


White	Latino	Asian American	African American
International	American Indian	Other/Not Reported	

**Sources of New Freshmen  
By School Type  
Fall 1999 - Fall 2008**

Type of School	99	00	01	02	03	04	05	06	07	08
<b>Lasallian %</b>	<b>8.0%</b>	<b>9.0%</b>	<b>6.4%</b>	<b>9.0%</b>	<b>6.4%</b>	<b>7.2%</b>	<b>7.7%</b>	<b>8.0%</b>	<b>9.0%</b>	<b>8.9%</b>
<b>#</b>	<b>48</b>	<b>57</b>	<b>37</b>	<b>59</b>	<b>36</b>	<b>44</b>	<b>52</b>	<b>49</b>	<b>55</b>	<b>60</b>
<b>Catholic % (Includes CB's)</b>	<b>34%</b>	<b>36%</b>	<b>31%</b>	<b>34%</b>	<b>34%</b>	<b>36%</b>	<b>34%</b>	<b>34%</b>	<b>32%</b>	<b>39%</b>
<b>#</b>	<b>213</b>	<b>220</b>	<b>182</b>	<b>220</b>	<b>193</b>	<b>219</b>	<b>229</b>	<b>208</b>	<b>195</b>	<b>262</b>
<b>Public %</b>	<b>58%</b>	<b>56%</b>	<b>60%</b>	<b>57%</b>	<b>56%</b>	<b>55%</b>	<b>57%</b>	<b>56%</b>	<b>58%</b>	<b>52%</b>
<b>#</b>	<b>358</b>	<b>344</b>	<b>347</b>	<b>368</b>	<b>315</b>	<b>334</b>	<b>386</b>	<b>342</b>	<b>354</b>	<b>351</b>
<b>Independent % (Non-Catholic)</b>	<b>8.0%</b>	<b>9.0%</b>	<b>9.0%</b>	<b>9.0%</b>	<b>9.0%</b>	<b>9.0%</b>	<b>8.0%</b>	<b>10%</b>	<b>10%</b>	<b>9%</b>
<b>#</b>	<b>49</b>	<b>54</b>	<b>51</b>	<b>57</b>	<b>56</b>	<b>58</b>	<b>57</b>	<b>60</b>	<b>62</b>	<b>62</b>

**SOURCES OF NEW FRESHMEN  
BY SCHOOL TYPE, 1999 - 2008**



**Sources of New Freshmen  
By Geographic Location of Previous School  
Fall 1999 - Fall 2008**

Location		99	00	01	02	03	04	05	06	07	08
<b>*Northern California</b>	%	63%	70%	67%	68%	61%	66%	65%	66%	65%	62%
	#	393	432	391	437	341	405	439	402	396	420
<b>Southern California</b>	%	21%	14%	15%	15%	17%	16%	17%	18%	18%	19%
	#	129	84	88	97	97	100	114	110	110	126
<b>Out of State (USA)</b>	%	13%	13%	14%	15%	18%	15%	16%	15%	15%	16%
	#	82	82	83	95	99	89	107	92	92	109
<b>International</b>	%	3%	3%	3%	2%	4%	3%	2%	1%	2%	3%
	#	16	20	18	16	25	17	12	6	13	20

\* Northern California is defined as Fresno and geographic areas north.

**SOURCES OF NEW FRESHMEN BY GEOGRAPHIC LOCATION OF  
PREVIOUS SCHOOL**

