

## Memorandum

**To:** Members of the Saint Mary's College Community  
**From:** Michael Beseda  
**Date:** September 20, 2006  
**Subject:** Fall 2006 Undergraduate New Student Enrollment

Attached are several tables and charts providing descriptive and historical information on new undergraduate student enrollment at Saint Mary's. The following items are worthy of note:

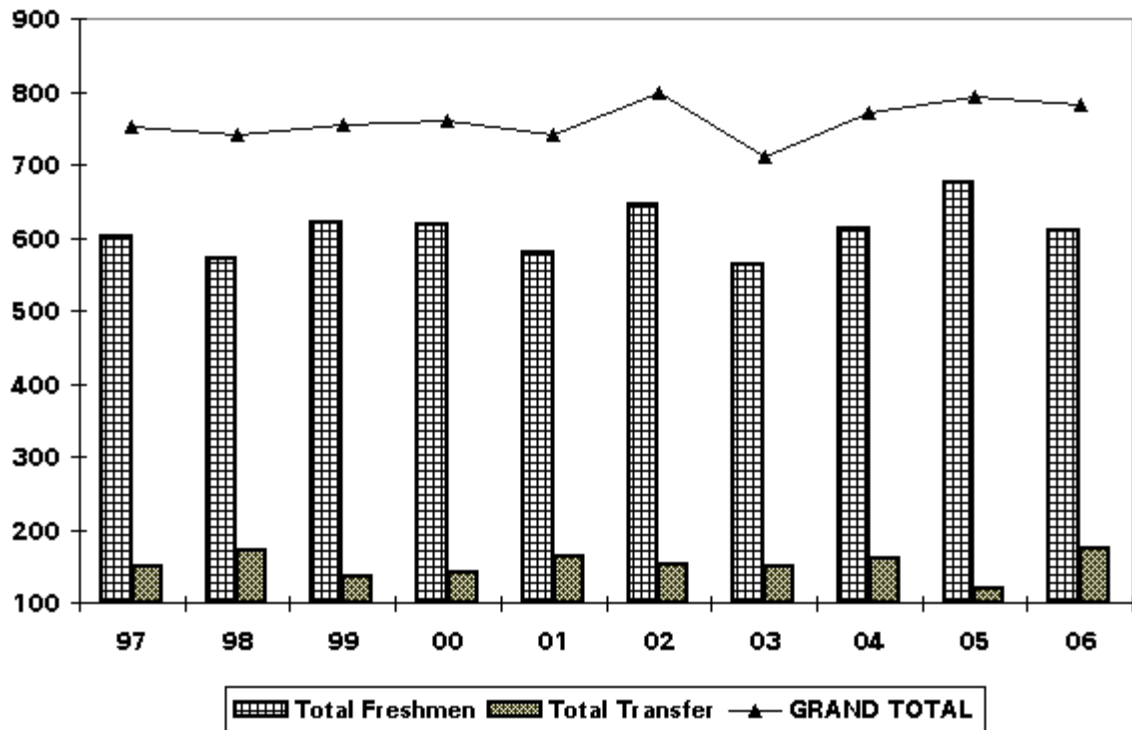
- 1) Fall 2006 new student enrollment of 783 is the third largest in Saint Mary's history. It exceeds the College's fall enrollment goal of 770 by 13 students (1.7%). New freshmen enrollment of 610 is 65 students fewer (9.6%) than fall 2005's record high while nearly equaling the average freshman enrollment for the previous five years of 614. Transfer enrollment rebounded for fall 2006, rising by 55 students to 173 from last fall's record low of 118, a 46.6 % increase. This is the largest new transfer student class in the past decade.
- 2) Saint Mary's new student discount rate (proportion of new student tuition revenue provided to students as institutional grant aid) rose to 31.5% for fall 2006, slightly higher than the level for fall 2005 (29.0%) and lower than the high reached in fall 2002 of 34.2%. Anticipated increases in funding for athletic scholarships contributed to the increase in discount rate for fall 2006. Increased aid funding by the College, failed to offset proportional declines in state and federal grant aid. As a result the portion of Saint Mary's freshmen that are Pell Grant eligible (20.5%) for fall 2006 fell to the lowest level in the past decade.
- 3) The number of applicants for freshman admission to Saint Mary's for fall 2006 increased by 47.6% (1610) from the previous fall. The substantial increase in applications was the result of the College's use of "priority" applications. As expected yield (portion of admitted students who actually enroll) from priority applicants was modest (4.9%). Of concern and surprise (given extremely positive response to spring yield activities) was the record low level of yield (21.9%) of non-priority applicants.
- 4) After a decade of decline, transfer applications increased by 25% (112) to 558 for fall 2006. Yield on admitted transfer students (49.9%) also rebounded to a near record level.
- 5) The average high school GPA of entering Saint Mary's freshmen remained the same for fall 2006 as for fall 2005, 3.33. The total of 21 Presidential Scholars for fall 2006 is the second largest in College history. New transfer students enrolling with Honors at Entrance more than doubled, from 8 for fall 2005 to 19 for fall 2006.
- 6) The class of 2010 is the first required to take the "new" SAT. As for students nationwide, the SAT average of new freshmen students at SMC declined for fall 2006, from 1096 for fall 2005 to 1080 for fall 2006. Information forthcoming from the College Board on the testing patterns of students at other colleges will help determine the import of the score average change at Saint Mary's.

- 7) Forty-four percent of new Saint Mary's freshmen students are African American, American Indian, Asian, or Latino, the highest level in the College's history. This compares with 31% ten years ago. The portion of Asian American (14.3%) students in the entering freshman class represents an all time high for Saint Mary's. Enrollment by African American students rebounded to a record level (7.5%) after declining for fall 2005.
- 8) Female students comprise 64.4% of the new freshman class, while males make up 35.6%.
- 9) Both the geographic and secondary school source origins of new students remained similar to prior years.

Please feel free to contact me with questions or comments about these data.

## UNDERGRADUATE NEW ENROLLED STUDENTS FALL 1997 - FALL 2006

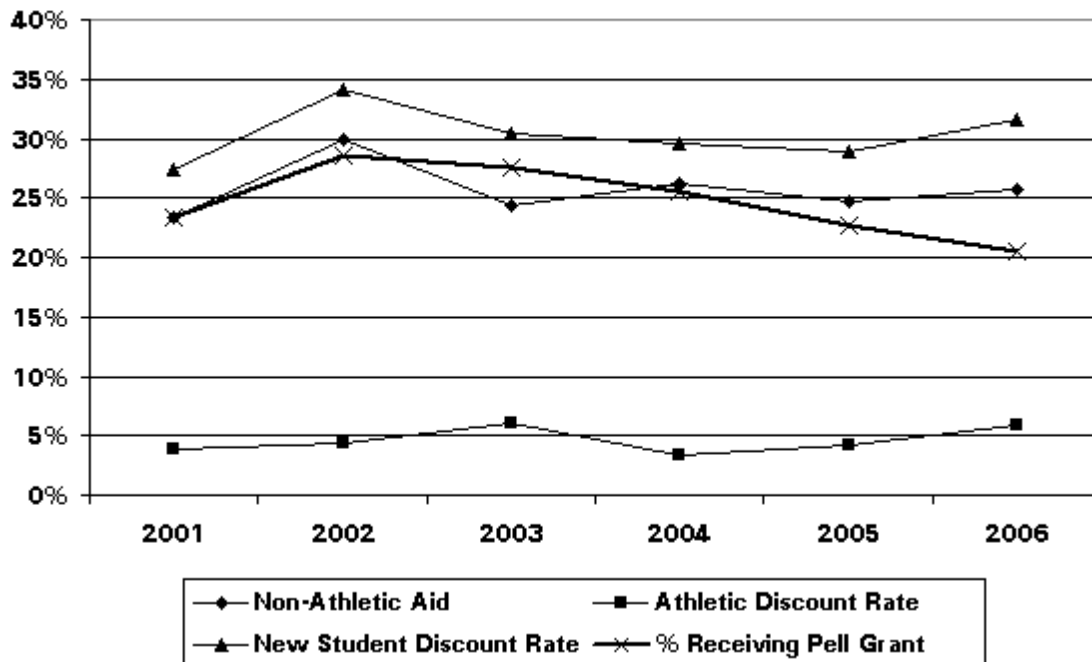
	97	98	99	00	01	02	03	04	05	06
<b>Freshmen</b>										
<b>Male</b>	251	230	262	250	228	243	244	223	264	217
<b>Female</b>	351	342	358	368	352	402	318	388	411	393
<b>Total Freshmen</b>	<b>602</b>	<b>572</b>	<b>620</b>	<b>618</b>	<b>580</b>	<b>645</b>	<b>562</b>	<b>611</b>	<b>675</b>	<b>610</b>
<b>% of Total Under-graduate Enrollment</b>	27.4%	25.1%	26.6%	24.8%	23.2%	25.1%	22.4%	25.9%	26.7%	24.5%
<b>Transfer</b>										
<b>Male</b>	62	70	50	61	59	68	59	57	44	73
<b>Female</b>	87	100	86	81	103	85	89	102	74	100
<b>Total Transfer</b>	<b>149</b>	<b>170</b>	<b>136</b>	<b>142</b>	<b>162</b>	<b>153</b>	<b>148</b>	<b>159</b>	<b>118</b>	<b>173</b>
<b>% of Total Under-graduate Enrollment</b>	6.8%	7.4%	5.8%	5.7%	6.5%	6.0%	5.9%	6.5%	4.7%	6.9%
<b>GRAND TOTAL</b>	<b>751</b>	<b>742</b>	<b>756</b>	<b>760</b>	<b>742</b>	<b>798</b>	<b>710</b>	<b>770</b>	<b>793</b>	<b>783</b>



**SMC NEW STUDENT  
REVENUE, DISCOUNT RATE AND PELL GRANT DATA  
2001 - 2006**

	2001	2002	2003	2004	2005	2006
Total New Students	742	798	710	770	793	783
Tuition Rate	\$19,545	\$20,885	\$23,775	\$25,150	\$27,280	\$29,050
New Student Revenue	\$14,502,390	\$16,666,230	\$16,880,250	\$19,365,500	\$21,633,040	\$22,746,150
Non-Athletic Aid	\$3,395,193	\$4,972,820	\$4,122,647	\$5,065,402	\$5,345,591	\$5,835,313
<b>Non-Athletic Discount Rate</b>	<b>23.4%</b>	<b>29.8%</b>	<b>24.4%</b>	<b>26.2%</b>	<b>24.7%</b>	<b>25.7%</b>
Athletic	\$567,539	\$726,546	\$1,021,934	\$653,456	\$922,921	\$1,333,216
<b>Athletic Discount Rate</b>	<b>3.9%</b>	<b>4.4%</b>	<b>6.1%</b>	<b>3.4%</b>	<b>4.3%</b>	<b>5.9%</b>
Total Aid	\$3,962,732	\$5,699,366	\$5,144,581	\$5,718,858	\$6,268,512	\$7,168,529
Net Revenue	\$10,539,658	\$10,966,864	\$11,735,669	\$13,646,642	\$15,364,528	\$15,577,621
New Revenue per Student	\$14,204	\$13,743	\$16,529	\$17,723	\$19,375	\$19,895
<b>New Student Discount Rate</b>	<b>27.3%</b>	<b>34.2%</b>	<b>30.5%</b>	<b>29.5%</b>	<b>29.0%</b>	<b>31.5%</b>
% Receiving Pell Grant	23.3%	28.6%	27.5%	25.5%	22.7%	20.5%

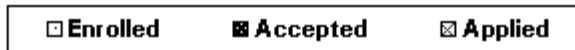
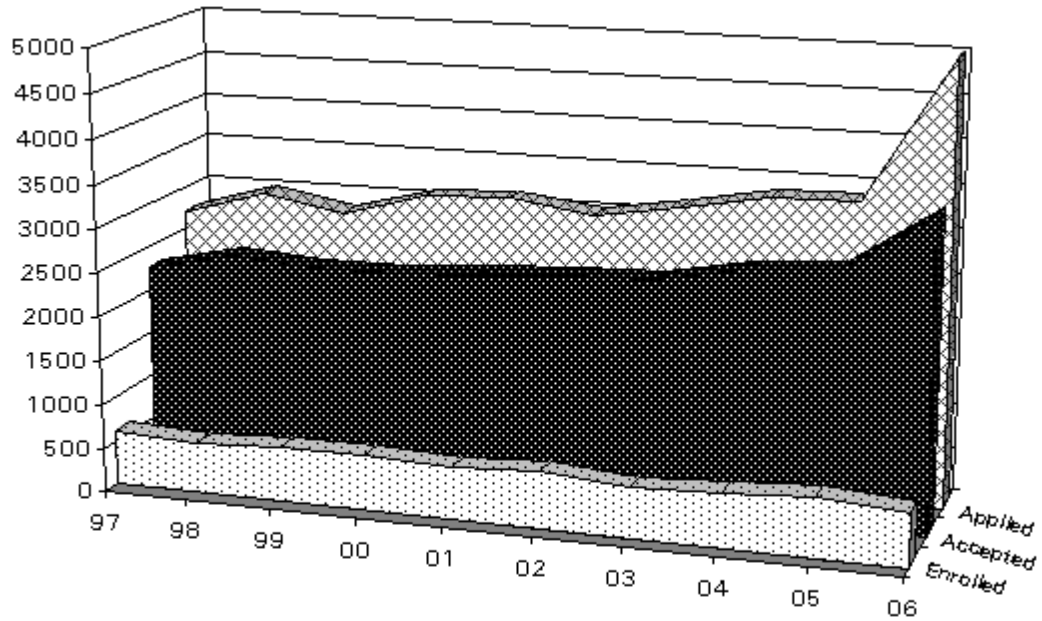
**New Student - Discount Rate, Revenue and Pell Grant Data**



**UNDERGRADUATE FRESHMEN  
APPLICATIONS, ACCEPTANCES AND ENROLLED  
FALL 1997 - FALL 2006**

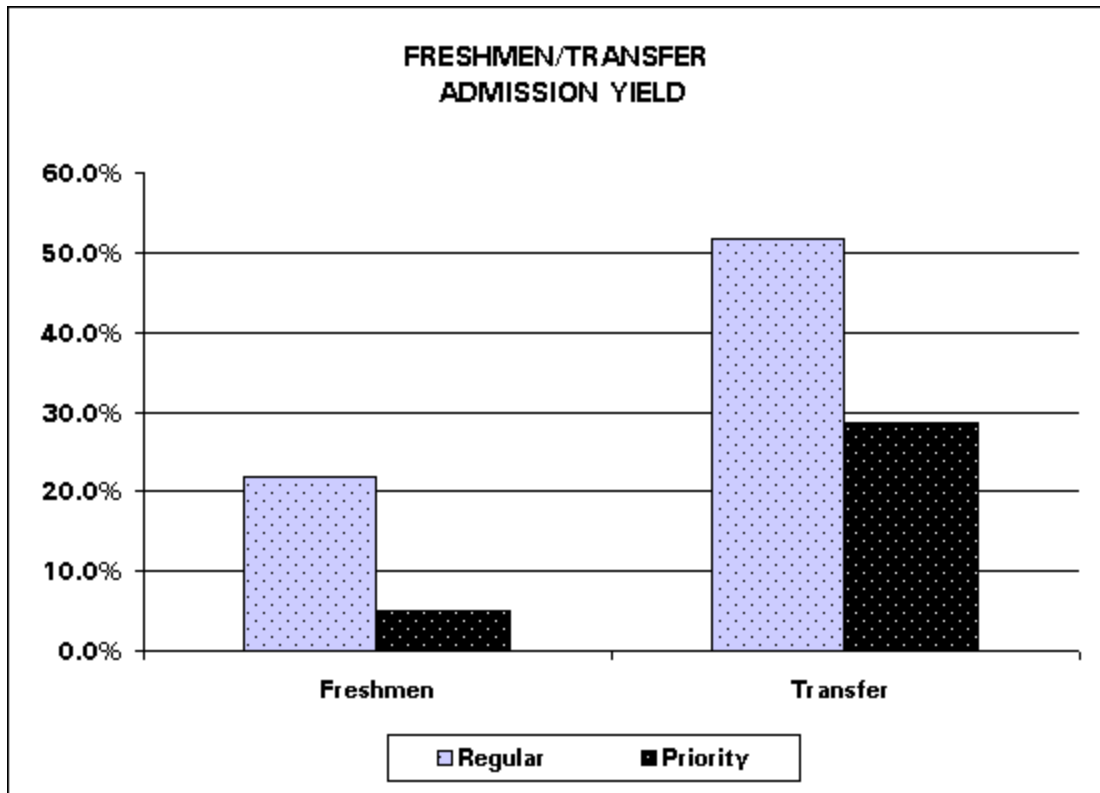
	<b>97</b>	<b>98</b>	<b>99</b>	<b>00</b>	<b>01</b>	<b>02</b>	<b>03</b>	<b>04</b>	<b>05</b>	<b>06</b>
Applied	2719	2999	2830	3103	3146	3022	3172	3354	3381	4991
Accepted	2278	2478	2419	2428	2496	2559	2590	2779	2861	3508
Acceptance Rate	84%	83%	85%	78%	79%	85%	82%	83%	85%	70%
<b>Enrolled</b>	<b>602</b>	<b>572</b>	<b>620</b>	<b>618</b>	<b>580</b>	<b>645</b>	<b>562</b>	<b>611</b>	<b>675</b>	<b>610</b>
Yield	26.4%	23.1%	25.6%	25.5%	23.2%	25.2%	21.7%	22.0%	23.6%	17.4%

**Applications, Acceptances and Enrolled:  
Undergraduate Freshmen**



**PRIORITY AND REGULAR ADMISSION DATA  
Fall 2006**

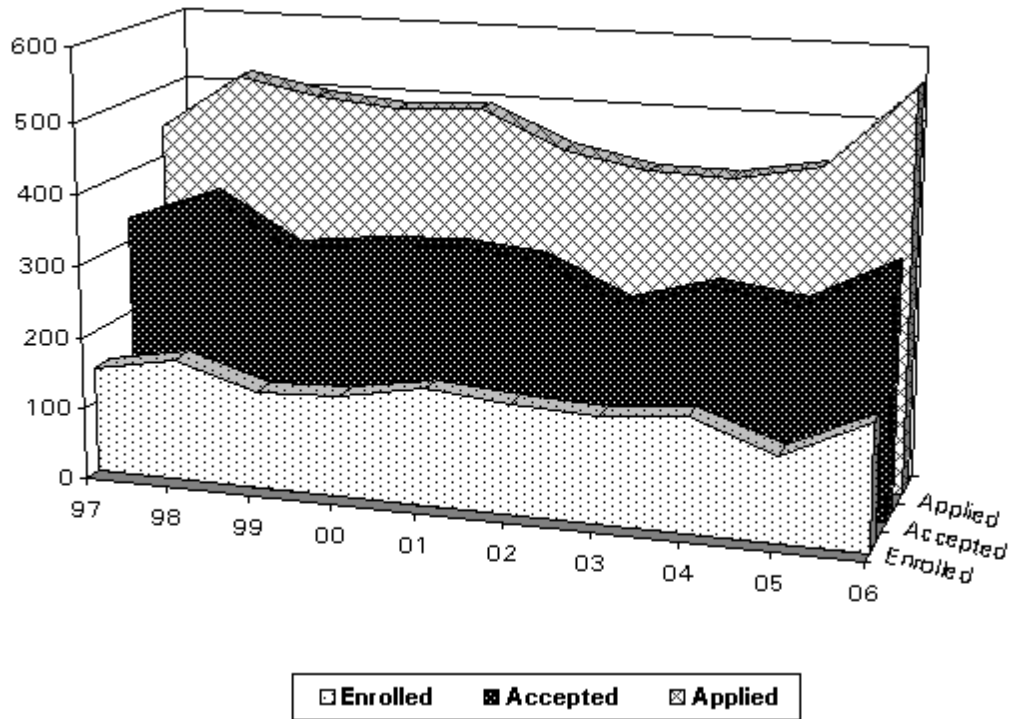
	FRESHMEN			TRANSFER		
	Regular	Priority	Total	Regular	Priority	Total
<b>Applied</b>	3142	1849	<b>4991</b>	481	64	<b>545</b>
<b>Accepted</b>	2586	922	<b>3508</b>	323	21	<b>344</b>
<b>Deposited</b>	616	55	<b>671</b>	205	8	<b>213</b>
<b>Enrolled</b>	565	45	<b>610</b>	167	6	<b>173</b>
<i><b>Yield</b></i>	<i><b>21.8%</b></i>	<i><b>4.9%</b></i>	<i><b>17.4%</b></i>	<i><b>51.7%</b></i>	<i><b>28.6%</b></i>	<i><b>50.3%</b></i>



**UNDERGRADUATE TRANSFERS  
APPLICATIONS, ACCEPTANCES AND ENROLLED  
FALL 1997 - FALL 2006**

	<b>97</b>	<b>98</b>	<b>99</b>	<b>00</b>	<b>01</b>	<b>02</b>	<b>03</b>	<b>04</b>	<b>05</b>	<b>06</b>
Applied	441	522	501	490	497	446	424	422	446	558
Accepted	332	375	308	323	330	318	266	301	285	347
Acceptance Rate	75%	72%	62%	66%	66%	71%	63%	71%	64%	62%
<b>Enrolled</b>	<b>149</b>	<b>170</b>	<b>136</b>	<b>142</b>	<b>162</b>	<b>153</b>	<b>148</b>	<b>159</b>	<b>118</b>	<b>173</b>
Yield	44.9%	45.3%	44.2%	44.0%	49.1%	48.1%	55.6%	52.8%	41.4%	49.9%

**Applications, Acceptances and Enrolled:  
Undergraduate Transfers**



**SELECTED ACADEMIC CHARACTERISTICS  
NEW STUDENTS  
FALL 1997 - FALL 2006**

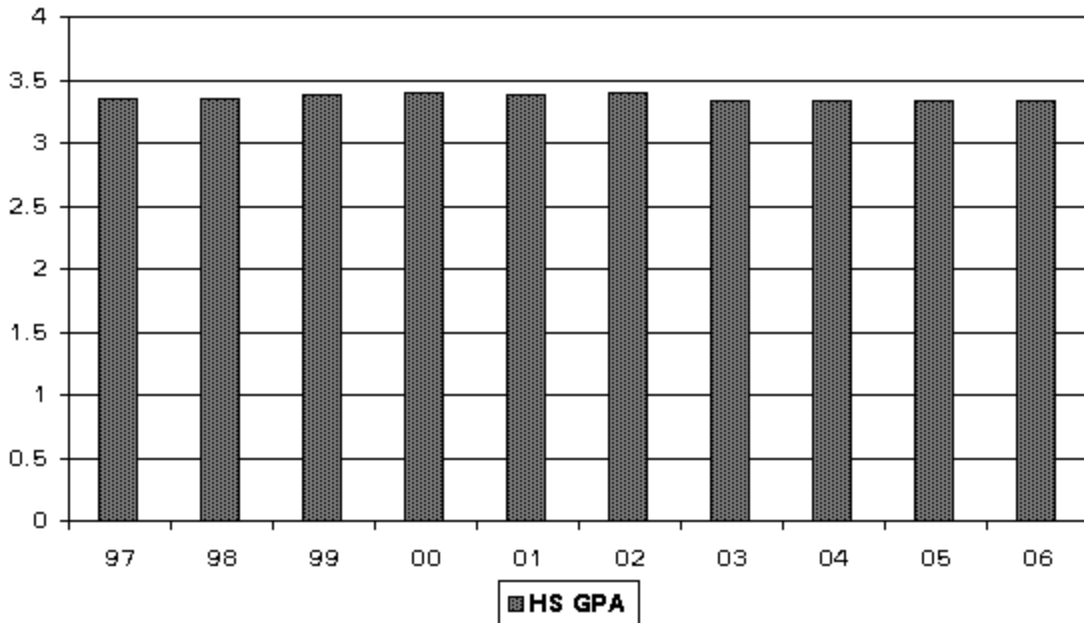
	97	98	99	00	01	02	03	04	05	06
<b>*Presidential Scholars</b>	14	15	8	18	11	19	17	13	32	21
<b>**Honors at Entrance Freshm</b>	81	64	63	67	45	71	58	61	80	63
<b>Transfer</b>	n/a	20	14	7	15	15	7	19	8	19
<b>HS GPA</b>	3.35	3.35	3.38	3.40	3.38	3.40	3.33	3.34	3.33	3.33
<b>***SAT Verbal/CR</b>	558	547	544	551	548	551	544	547	548	537
<b>***SAT Math</b>	557	553	548	552	547	552	551	548	548	543
<b>***TOTAL SAT</b>	1115	1100	1092	1103	1095	1103	1095	1095	1096	1080

\* **Presidential Scholars** students are admitted with a minimum high school GPA of 3.8 and total SAT of 1350 (or ACT equivalent)

\*\* **Honors at Entrance** freshman students are admitted with a minimum high school GPA of 3.7 and total SAT of 1200 (1180 prior to '98) or ACT equivalent. Honors at Entrance transfer students must present a minimum cumulative collegiate GPA of 3.5 in a minimum of 30 transferable semester units and be admitted by 3/2.

\*\*\* For explanation of how SAT scores are calculated see note in Frequently Asked Question Section of Fact Book.

**NEW FRESHMEN  
HIGH SCHOOL GRADE POINT AVERAGE**



**UNDERGRADUATE FRESHMEN SAT SCORES**  
**FALL 2001 - FALL 2006**

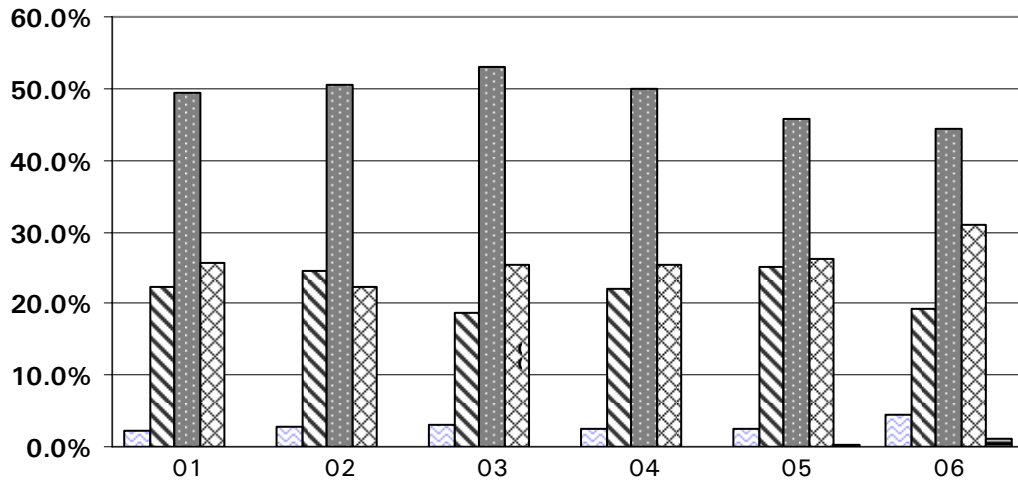
**Verbal/Critical Reading**

	<b>2001</b>	<b>2002</b>	<b>2003</b>	<b>2004</b>	<b>2005</b>	<b>2006</b>
700-800	2.2% (11)	2.9% (15)	3.1% (14)	2.6% (13)	2.5% (14)	4.5% (22)
600-690	22.4% (107)	24.5% (127)	18.6% (85)	22.1% (111)	25.1% (141)	19.3% (95)
500-590	49.5% (236)	50.4% (261)	53.1% (243)	49.9% (251)	45.7% (257)	44.3% (218)
400-490	25.8% (123)	22.2% (115)	25.3% (116)	25.3% (127)	26.3% (148)	30.9% (152)
300-390	0.0% (0)	0.0% (0)	0.0% (0)	0.1% (1)	0.3% (2)	1.0% (5)
<b>Number</b>	<b>477</b>	<b>518</b>	<b>458</b>	<b>503</b>	<b>562</b>	<b>492</b>
<b>Mean</b>	<b>548</b>	<b>551</b>	<b>544</b>	<b>547</b>	<b>548</b>	<b>537</b>
<b>Median</b>	<b>540</b>	<b>540</b>	<b>540</b>	<b>540</b>	<b>540</b>	<b>520</b>
<b>STD.DEV</b>	<b>69</b>	<b>69</b>	<b>70</b>	<b>69</b>	<b>73</b>	<b>81</b>

**Math**

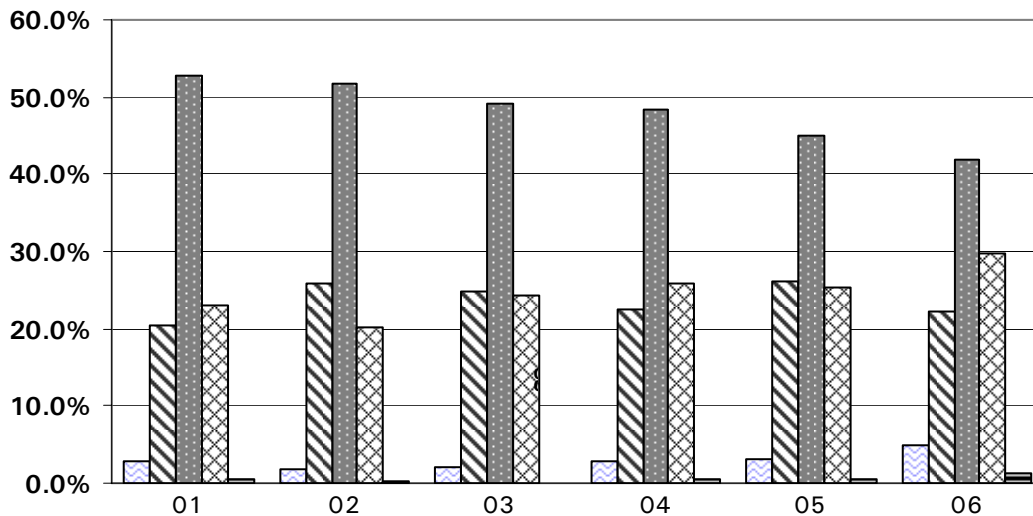
	<b>2001</b>	<b>2002</b>	<b>2003</b>	<b>2004</b>	<b>2005</b>	<b>2006</b>
700-800	2.9% (14)	1.7% (9)	2.0% (9)	2.8% (14)	3.0% (17)	4.9% (24)
600-690	20.5% (98)	25.9% (134)	24.7% (113)	22.5% (113)	26.2% (147)	22.2% (109)
500-590	52.8% (252)	51.7% (268)	49.1% (225)	48.3% (243)	45.0% (253)	41.8% (206)
400-490	23.1% (110)	20.3% (105)	24.2% (111)	25.8% (130)	25.3% (142)	29.7% (146)
300-390	0.6% (3)	0.3% (2)	0.0% (0)	0.6% (3)	0.5% (3)	1.4% (7)
<b>Number</b>	<b>477</b>	<b>518</b>	<b>458</b>	<b>503</b>	<b>562</b>	<b>492</b>
<b>Mean</b>	<b>547</b>	<b>552</b>	<b>551</b>	<b>548</b>	<b>548</b>	<b>543</b>
<b>Median</b>	<b>550</b>	<b>550</b>	<b>550</b>	<b>550</b>	<b>540</b>	<b>540</b>
<b>STD.DEV</b>	<b>69</b>	<b>67</b>	<b>70</b>	<b>73</b>	<b>75</b>	<b>82</b>

### SAT VERBAL/CRITICAL READING SCORES



700-800	2.2%	2.9%	3.1%	2.6%	2.5%	4.5%
600-690	22.4%	24.5%	18.6%	22.1%	25.1%	19.3%
500-590	49.5%	50.4%	53.1%	49.9%	45.7%	44.3%
400-490	25.8%	22.2%	25.3%	25.3%	26.3%	30.9%
300-390	0.0%	0.0%	0.0%	0.1%	0.3%	1.0%

### SAT MATH SCORES

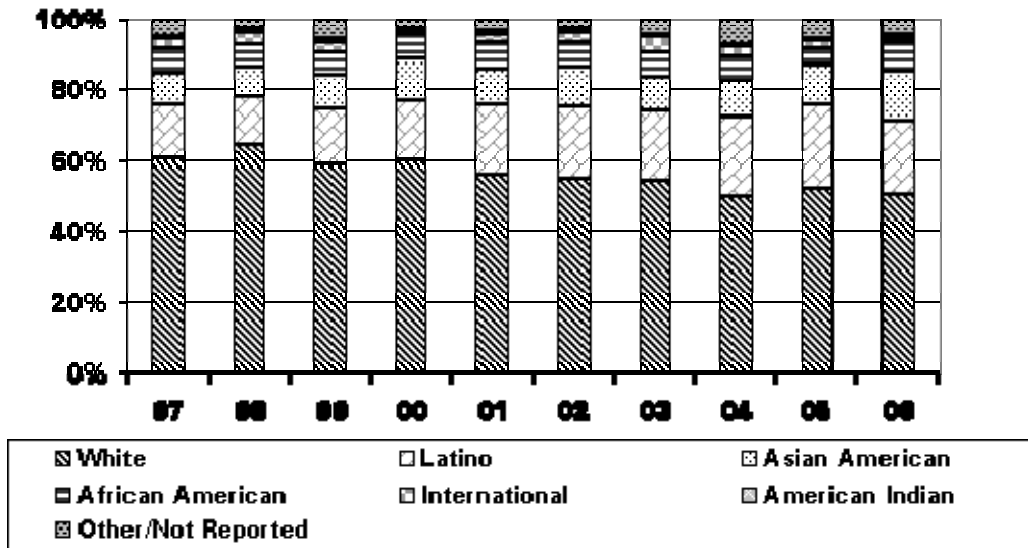


700-800	2.9%	1.7%	2.0%	2.8%	3.0%	4.9%
600-690	20.5%	25.9%	24.7%	22.5%	26.2%	22.2%
500-590	52.8%	51.7%	49.1%	48.3%	45.0%	41.8%
400-490	23.1%	20.3%	24.2%	25.8%	25.3%	29.7%
300-390	0.6%	0.3%	0.0%	0.6%	0.5%	1.4%

**NEW FRESHMEN STUDENTS  
GENDER AND ETHNICITY  
FALL 1997 - FALL 2006**

	97	98	99	00	01	02	03	04	05	06
Male	41.7	40.2	42.3	40.5	39.3	37.7	43.4	36.5	39.2	35.6
Female	58.3	59.8	57.7	59.5	60.7	62.3	56.6	63.5	60.8	64.4
<b>African American</b>	6.5	5.9	6.1	6.6	7.2	7.0	7.1	7.2	4.7	7.5
<b>American Indian</b>	0.3	1.0	1.2	1.0	1.0	1.3	0.9	0.5	0.4	1.3
<b>Asian American</b>	9.0	8.7	9.7	11.8	10.2	11.4	9.6	9.8	11.3	14.3
<b>Latino</b>	15.6	13.4	15.8	16.8	19.7	20.3	19.4	22.7	23.6	21.0
<b>White</b>	60.3	64.5	58.9	60.2	56.0	54.6	54.4	49.7	52.2	50.3
<b>International</b>	3.2	3.7	2.6	1.0	2.6	2.3	4.3	2.6	1.9	1.0
<b>Other/Not Reported</b>	5.2	2.9	5.7	3.0	3.4	2.8	4.3	7.4	5.9	4.6
<b>BASE:</b>	<b>602</b>	<b>572</b>	<b>620</b>	<b>618</b>	<b>580</b>	<b>645</b>	<b>562</b>	<b>611</b>	<b>675</b>	<b>610</b>

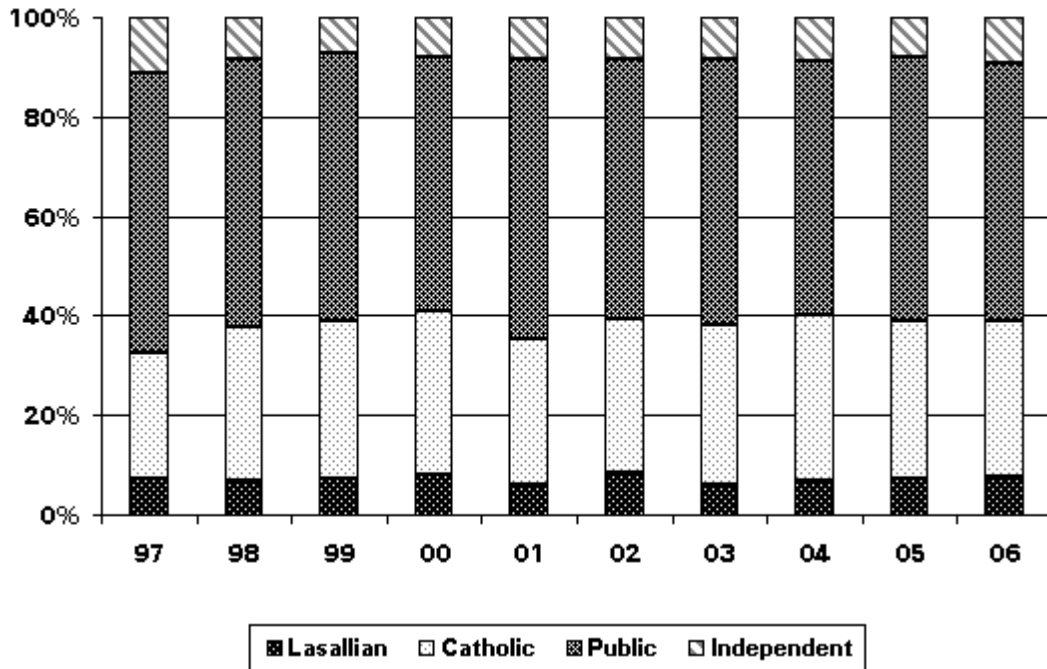
**NEW FRESHMEN STUDENTS:  
ETHNIC DISTRIBUTION 1997-2006**



**Sources of New Freshmen  
By School Type  
Fall 1997 - Fall 2006**

Type of School		97	98	99	00	01	02	03	04	05	06
<b>Lasallian</b>	%	8%	7.3%	8%	9%	6.4%	9%	6.4%	7.2%	7.7%	8.0%
	#	48	42	48	57	37	59	36	44	52	49
<b>Catholic (Includes CB's)</b>	%	27%	33%	34%	36%	31%	34%	34%	36%	34%	34%
	#	164	189	213	220	182	220	193	219	229	208
<b>Public</b>	%	61%	58%	58%	56%	60%	57%	56%	55%	57%	56%
	#	369	330	358	344	347	368	315	334	386	342
<b>Independent (Non-Catholic)</b>	%	12%	9%	8%	9%	9%	9%	9%	9%	8%	10%
	#	69	53	49	54	51	57	56	58	57	60

**SOURCES OF NEW FRESHMEN  
BY SCHOOL TYPE, 1997 - 2006**



**Sources of New Freshmen  
By Geographic Location of Previous School  
Fall 1997 - Fall 2006**

		97	98	99	00	01	02	03	04	05	06
<b>Location</b>											
<b>*Northern</b>											
<b>California</b>	%	64%	62%	63%	70%	67%	68%	61%	66%	65%	66%
	#	384	353	393	432	391	437	341	405	439	402
<b>Southern</b>											
<b>California</b>	%	21%	21%	21%	14%	15%	15%	17%	16%	17%	18%
	#	126	119	129	84	88	97	97	100	114	110
<b>Out of State</b>	%	12%	13%	13%	13%	14%	15%	18%	15%	16%	15%
<b>(USA)</b>	#	74	77	82	82	83	95	99	89	107	92
<b>International</b>	%	3%	4%	3%	3%	3%	2%	4%	3%	2%	1%
	#	18	23	16	20	18	16	25	17	12	6

\* Northern California is defined as Fresno and all points North.

**SOURCES OF NEW FRESHMEN GEOGRAPHIC LOCATION OF  
PREVIOUS SCHOOL**

