



GUATEMALA 2014

AUGUST 15th – AUGUST 24th

TRIP LEADERSHIP & PARTNERS

Ryan M. Lamberton, M.A., '05, '12
 CILSA, Saint Mary's College of CA.
 RML4@stmarys-ca.edu
 925.631.4015

[SHARE Guatemala](#)

[VIA International](#)

OVERVIEW

CILSA is the service-learning and social justice education center at Saint Mary's College of California. CILSA and the Alumni Association are partnering to plan a service-learning trip to Guatemala for Alumni, family and friends of SMC.

Guatemala directly translates as "the land of the trees" however, in the Mayan-Toltec language it is referred to as the "Land of Eternal Springs." It is home to the ancient and impressive Mayan civilization, whose descendants remain today. As a participant in the inaugural Global Family Service Corps trip to Guatemala you're invited to experience the remarkable intersection of this ancient wisdom and various community development initiatives. Participants will learn, serve and experience firsthand the beauty of Guatemala.

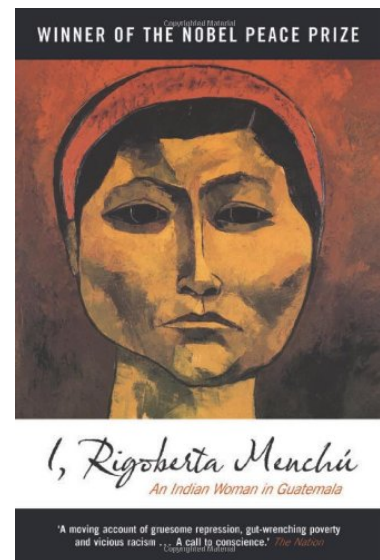
This document provides the following information about this program: Learning Goals, Trip Leader summaries, important dates & deadlines, vaccinations & medications, summative itinerary, basic information about Guatemala, preparation information, safety and communication information, behavioral expectations and program cost details.

LEARNING GOALS

The success of this program relies upon participants' engagement with the conversation, readings, and travel experience, and in their building community with fellow participants, the leaders, and community members we meet. By the end of the program, participants who were fully engaged will:

- Be conversant with concern to the history, culture, and politics of Guatemala
- Investigate possible intersections between sustainable development and their own conceptions of working toward the common good
- Examine their relationships with and to citizens of developing countries
- Apply their knowledge of community engagement and human rights to the case study of Guatemala
- Understand [CILSA's](#) role within the mission of Saint Mary's College of California

READING: I, Rigoberta Menchú & excerpts from: [The Guatemala Reader: History, Culture, Politics \(The Latin America Readers\)](#)



**PROGRAM FEE –
\$1,899.00 (single OR double occupancy)**

This fee includes lodging, in-country transportation, breakfasts, lunches and dinners, entrance fees, local guides, reader and emergency health/travel insurance. *Airfare is not included. Participants will be required to have certain vaccinations and medications for the trip; these will have differing costs depending on each participant's medical insurance.

REGISTRATION / PAYMENT TIMELINE

- **APRIL 1, 2014** Online Registration Opens. 50% of program fee is due upon registration
- **JUNE 15, 2014** Online Registration Deadline. Email or mail travel packet upon registration
- **JULY 15, 2014** Final 50% of program fee deadline.

ABOUT THE TRIP LEADERS & PARTNERS

[Ryan M. Lamberton](#), '05, '12 has worked in community service and social justice education for over 6 years. His primary role at Saint Mary's College of California is as the educational partnerships & outreach coordinator of the Catholic Institute for Lasallian Social Action ([CILSA](#)); he directs summer fellowship programs and has lead workshops and taught courses on leadership for social change. Ryan has a graduate degree in counseling; his synthesis project examined the spiritual development of college participants during service-learning immersion programs. Ryan has taught English in the Dominican Republic and has taught two service-learning courses in Rwanda, Africa. Ryan will serve as the primary lead between the Saint Mary's group and the partners noted below

[SHARE Guatemala](#) is a non-profit, secular, apolitical organization working on development and assistance programs in Guatemala since 1987. We seek out opportunities for all; working in the poorest areas of the country, and particularly supporting the most vulnerable families and communities. SHARE's work is based on a participative methodology, working in close relation with organized groups and local partners in rural communities of Guatemala. We develop instructional programs in health and nutrition, education, agriculture and food production, administration and finance, as well as developing sustainable projects. SHARE staff member **Keila del Valle** will serve as the community facilitator.

[VIA International](#) is a 501(c)3 service organization based in San Diego and dedicated to building "paths to self-reliance for an interdependent world." Via International has successfully helped address community needs by supporting community members to become agents of positive change since 1975. Programs emerged from community needs to improve quality of life through nutrition and ecology training, community leadership education, and microcredit and microenterprise support. Voluntours programs offer educational travel and service-learning opportunities to engage with community development initiatives. The Via Institute provides a framework to nourish personal development, foster community engagement, strengthen organizations, and promote global dialogue.

IMPORTANT DATES & DEADLINES

- **APRIL 1, 2014** Online Registration Opens. 50% of program fee is due upon registration
- **JUNE 15, 2014** Online Registration Deadline. Email or mail travel packet upon registration
- **JULY 15, 2014** Final 50% of program fee deadline.
- **AUGUST 10, 2014.** 2pm-5pm Pre-Trip meeting at Saint Mary's College of California (if possible)
- **Fri. AUGUST 15, 2014** **Departure**
- **AUG. 16-23, 2014** **In Guatemala**
- **Sun. AUGUST 24, 2014** **Return**

VACCINATIONS & MEDICATIONS

Vaccinations for the following diseases are required, based on a review of [Center for Disease Control](#) (CDC) Your own physician may recommend additional vaccinations; however, these are the minimal requirements for this particular travel program. To get these vaccinations, contact your health care provider to see what may be covered under your current health plan and where to get the immunizations and medications.

- Routine vaccinations
- Hepatitis A & B
- Typhoid
- Polio
- Malaria – medication taken before, during & after the trip; consult with your physician to determine which form of medication is right for you.

PASSPORTS

If you do not already have a valid passport, begin the process very soon. **It currently takes 4-6 weeks for passports to be processed.** Information about this process is available at the [US State Department](#). Participants are responsible to pay fees to get a passport.

GLOBAL FAMILY SERVICE CORPS TRAVEL PACKET – JULY 15, 2014

The Global Family Service Corps travel packet includes information that will be vital should we encounter an emergency while in Guatemala. This information is kept on file in the CILSA offices and by your trip leaders while we travel.

Inaugural Trip

Global Family Service Corps GUATEMALA 2014 –ITINERARY AT-A-GLANCE-

Dates & Location	Daily Activities & Themes
AUG. 10th	2pm-5pm , Saint Mary's College of California: Global Family Service Corps MEET for a comprehensive overview and orientation of the program. (If possible)
AUG. 15th	DEPART from home city to Guatemala City, Guatemala. Arrive by Saturday, August 16, 2014.
AUG. 16th-23rd Based in Tecpan, Guatemala	16 – arrival & small tour of Guatemala City, Lunch, Check in at Tecpan, Guatemala, Group Introductions & Dinner 17 –Breakfast, Visit Chichicastenango Market, Visit Atitlan Lake, Lunch, Return to Tecpan, Dinner & Debrief 18 –Breakfast, Community Welcome Ceremony, Solidarity Project, Lunch, Solidarity Project, Conversation with community members, Migration film & discussion, & Dinner 19- Breakfast, Solidarity Project, Lunch, Solidarity Project, Cultural Exchange, Migration discussion continued, & Dinner 20– Breakfast, Solidarity Project, Lunch, Solidarity Project, Conversation with community members, Mass & Dinner 21– Breakfast, Visit local market in Tecpan, Tour Iximche Mayan Ruins, Lunch, Solidarity Project, Civil War Presentation & Discussion & Dinner 22 Breakfast, Solidarity Project, Closing Ceremony, Travel to Antigua, Visit Micro Credit Project, Free time in Antigua and Final dinner 23 Breakfast, Brief tour in Antigua and go to airport
AUG. 24	RETURN HOME

GETTING TO KNOW GUATEMALA



What languages are spoken in Guatemala?

Spanish is the official language of Guatemala; twenty-one Mayan languages are spoken in addition to Spanish. We will have translators with us throughout the trip so it is not required that you speak Spanish.

Will we be in rural and/or urban areas?

We will be primarily based in Tecpan (population- 60,000), which is about an hour north of the Guatemala's capital: Guatemala City.

Who will we meet in Guatemala?

We will meet professionals and vacationers, local non-profit leaders, guides, families, and children. With each conversation, you will represent Saint Mary's College of California and the United States, and you will be able to learn about the experiences of others.

I heard about the genocide and the civil war, how safe is it in Guatemala?

The Guatemalan civil war and genocide occurred between 1960 and 1996; the country has worked for nearly 20 years to recover from these atrocities. The government is a constitutional democratic republic and is stable. As for neighboring countries, the itinerary for this program does not take us near any of the bordering countries where there may be conflict. For up-to-date info, check out the [State Department](#) website.

Can I eat the food and drink the water there?

The [Center for Disease Control](#) provides the general guidelines that we will follow. In Tecpan, we will eat all of our breakfasts, lunches most of our dinners at reputable restaurants. There are a few things we will absolutely avoid during our trip, including tap water, ice cubes, and food from untrusted sources (like street vendors). We will have bottled beverages (water, soda, etc.) throughout the trip.

PREPARING FOR OUR TRAVELS

What is the lodging for this trip?

While in Guatemala, we will be staying at the Hotel La Villa de Don Pancho in Tecpan which is about an hour drive north of Guatemala City. The population of Tecpan is 60,000. The hotel caters to western business travelers and tourists from across around the world. The hotel is air-conditioned and has WiFi.

Will I share a room?

It is up to you! The price for the program is the same for single and double occupancy.

How will we be getting from one place to another?

Our daily trips from the hotel to service and study sites will be via a chartered bus with a professional driver. We will also be walking some as we tour various service and educational sites.



What should I leave behind?

- Your preconceptions about Central America AND Guatemala!
- Expensive jewelry and gadgets
- No pocket-knives or other small sharp objects (some are considered illegal weapons)
- Electronics – think long and hard about what you really need
- In general ... Do not bring something if you cannot bear it being lost, broken, or stolen.

What should I bring to Guatemala?

The weather in Guatemala hovers in the 80s, with sunshine and sometimes rain. Here is a list to get you started; we'll review/edit/add as we plan.

- Medications in their original packaging or prescription bottles; malaria meds
- Glasses, contact lens supplies, sunglasses
- Personal grooming needs (keep to a minimum)
- Insect repellent (bug spray) with 30%-50% DEET
- Hand sanitizer
- Heavy shoes for working/walking
- Hat for working/walking
- Pants, long shorts, shirts, layering clothes
- Sturdy work gloves for outdoor work
- Rain jacket
- Swimsuit, towel (for the hotel pool, if you want)
- One "business casual" outfit for attending church, etc.
- Electrical adapter (if you bring anything that requires electricity)

How much money do I need to bring?

The program fee is pretty all-inclusive. You will need to bring money for laundry, souvenirs, and food/drinks outside our regular meals. This [currency converter](#) will show you the current exchange rate between US dollars and the Guatemalan Quetzal. \$1USD = \$7.71 GTQ. **We recommend that you bring \$150-\$200 to cover the above items.**

SAFETY & COMMUNICATION

What happens if someone gets sick or injured?

We will have a first aid kit with us each day. If one of us gets sick or is injured, we will seek medical care. Because we are staying in large cities, hospitals are easily available to us. The trip leaders will carry a phone capable of making international and local calls. We will be in regular communication with CILSA staff and they will assist us in communicating with your family if needed.

What happens if one of us gets lost or separated from the group?

Participants will never travel alone. Even during free time, you will be required to travel in groups of no fewer than three people to ensure your safety. Also, all program activities will end before sunset each day so that we can be back in the hotel and fully present before nightfall. Each of us will always carry a card with the location of our hotels, contact information for the US Embassy and the trip leaders, and other important information. If you get separated from the group, you will contact the trip leaders, and we will make arrangements to connect with you.

How will I communicate with my family and friends while we are in Guatemala?

The easiest way to communicate with your loved ones will be via email. The hotel has WiFi as well as public computers. As a group, we will decide how to post regular pictures and reports either through a blog and group emails. If your family needs to reach you, they can contact the CILSA office that can put them in touch with the trip leaders. There is cell phone coverage throughout most of Guatemala; international rates will apply so be sure to discuss with your carrier.

BEHAVIORAL EXPECTATIONS & CONSEQUENCES

Each of us has an immense responsibility to support the safety of the group, honorably represent Saint Mary's College and the United States, and respect the people and places of Guatemala. As a starting point, please remember that all Saint Mary's College policies are in effect during our travels. You are expected to be **awake** and **prepared** for each day's events, demonstrate a **positive attitude**, and **act respectfully** toward your team leaders, each other, our hosts, and the people we serve. The Global Family Service Corps travel packet includes a contract you will sign regarding behavioral expectations. Here are behaviors and choices that will result in your early departure from Guatemala:

- Veering from program agenda/activities
- Persistent disrespectful behavior
- Persistent cultural insensitivity
- Physical altercations of any type
- Alcohol consumption to the point of visible intoxication
- Illegal and illicit drug use – If it is illegal in the US, consider it illegal in Guatemala (NOTE: to use drugs obtained in Guatemala is to risk your personal health, the position of our group, and your potential incarceration—NOT a risk you want to take)

If you are asked to leave Guatemala for any reason, you will be responsible for any costs associated with changing your departure date from the original itinerary.

How many people will be going on this trip?

We will take between 10 and 12 individuals on this trip. If 10 individuals do not register by JUNE 15th and you have already registered, you will receive a full refund.



LEARN MORE & REGISTER ONLINE TODAY...
www.stmarys-ca.edu/GlobalFamilyService

